

CUMBERLAND ELEMENTARY
SCHOOL

Cumberland Elementary

TK/Kinder & New Families
Chat With The Principal
&
School Tour



Your Asst. Principal
Ms. Jacobson

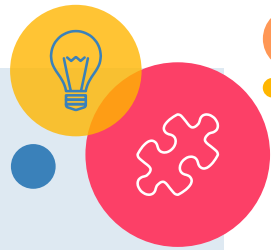


Your Principal
Ms. Carlson





Your Front Office Staff



Kristina Baldwin

Admin I - Part Time

Christy Naderi

Health Asst

Jen Gray

Admin I - Reg & Attend.

Mary Malcolm

Admin II - Office Manager

Today's Agenda

Mission & Values

Brief School Overview

Community Engagement Opportunities

Nuts & Bolts

Registration Information

TK/Kinder Classroom - A Photo Tour

Meet & Greet!

Campus Tour



OUR MISSION:

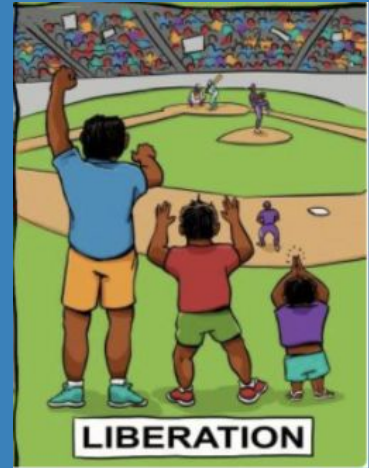
*To develop globally aware learners
who are compassionate problem
solvers and leaders.*



Learning Without
Limits!

**Relationships,
Relevance &
Rigor**

Equity & Access
for ALL!

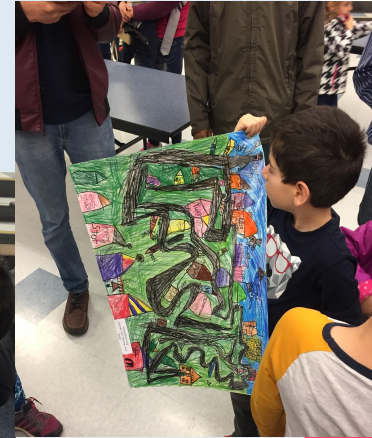




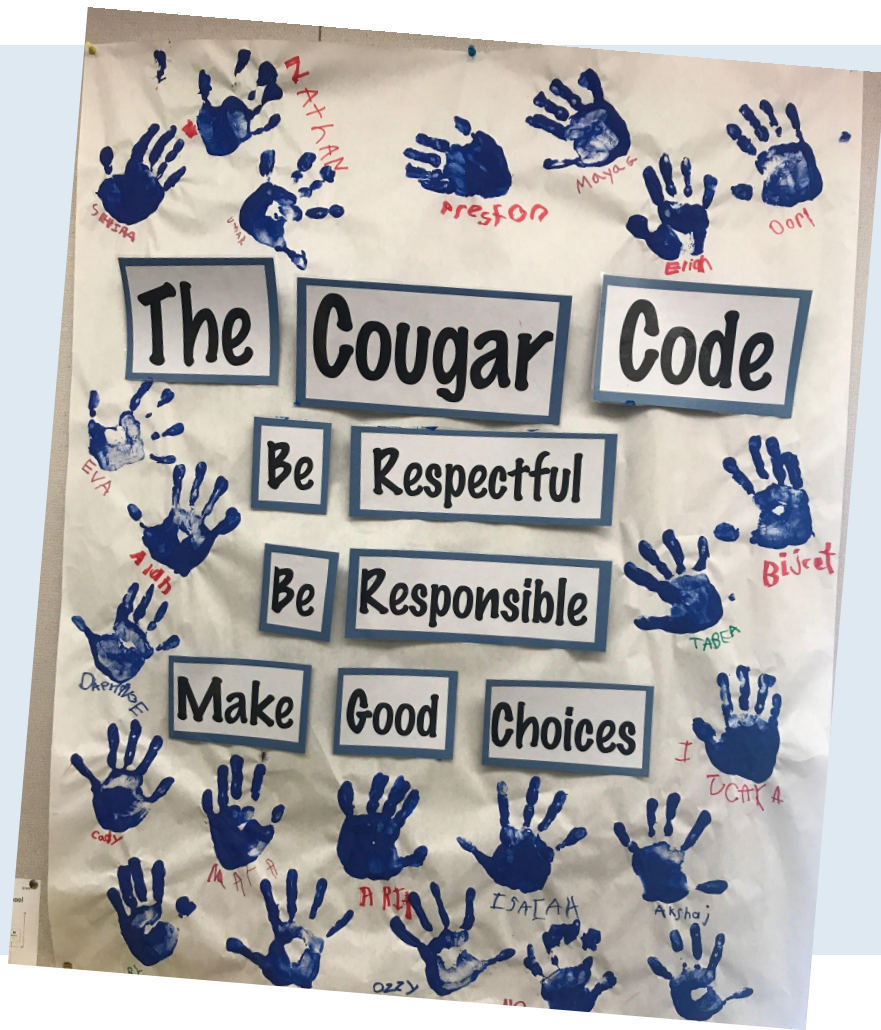
Transitional Kindergarten (TK) CA Preschool Learning Foundations

Kindergarten - 5th Grade CA Common Core Standards

TK - 5th Grade
21st Century Skills
Collaboration
Communication
Creativity
Critical Thinking
Compassion



Positive & Restorative Behavior Management



Brief Overview

Highly Qualified, Credentialed Teachers and Staff
Strong Academic, Social-Emotional, Behavioral &
Inclusion Programming

Recess & Arts Program Partnerships: Playworks, Starting Arts
Opportunities for Parent Volunteers

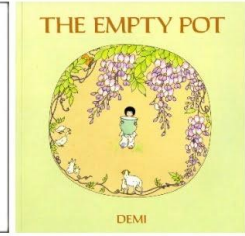
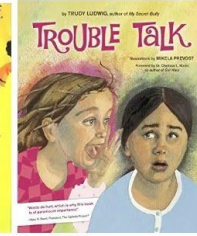
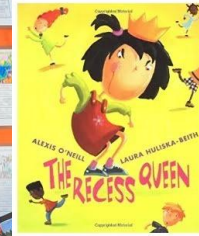
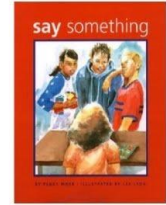
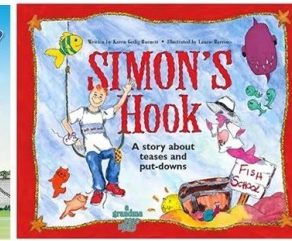
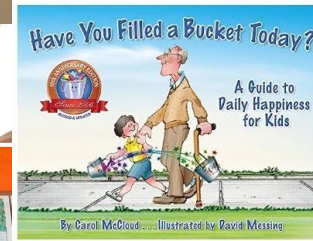
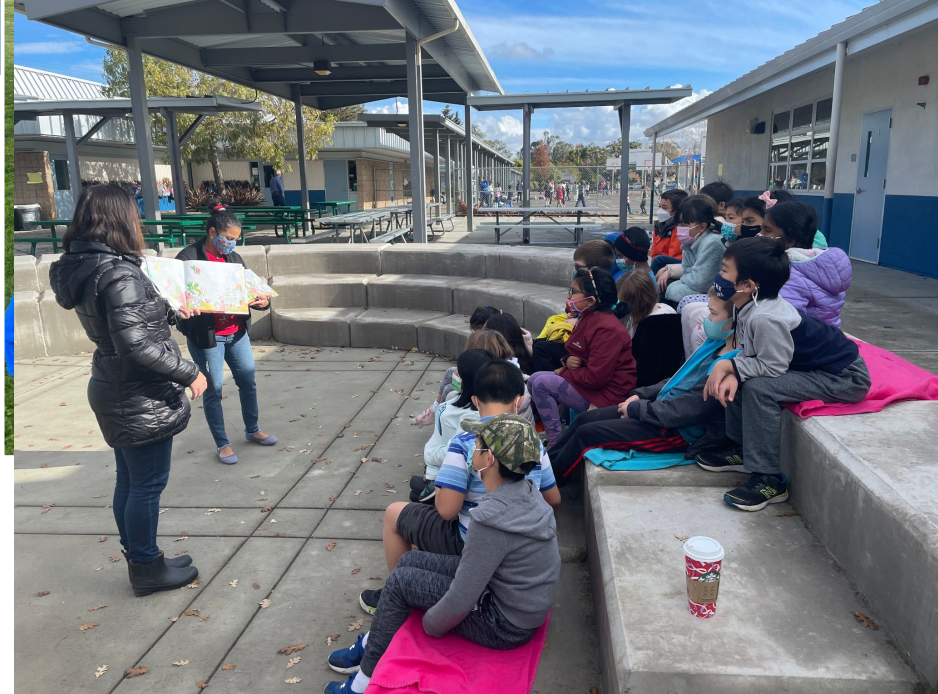
Active and Collaborative PTA

Rich After-School Programming

Lots of fun Community Events

School size - Approx 600 students, 30 classrooms

| | |
|------------|-----------------------------------|
| Class Size | TK @ 20:2 (1 Teacher/1 Assistant) |
| | K-3 @ 24:1 |
| | 4-5 @ 32:1 |



Community Engagement Opportunities

School Site Council (SSC)
English Learner Advisory Committee (ELAC)
Principal Chats & Principal Presentations
Classroom Volunteering

&

Parent Teacher Association (PTA)
TK/Kinder & New Family Welcome Program
newfamily@cumberlandpta.org

PTA Parent Reps:
Rebecca Tzarnotzky & Katherine Quinlin
TK/Kinder Google Group & Playdates

Nuts & Bolts



TK/Kinder First 6 Weeks: ½ Days

- M-F 8:15am - 11:35am
- No lunch, only snack

Full Day (TK/K Starts Beginning of October)

- M-Th 8:15am - 2:30 (TK/K 5 mins earlier)
- F 8:15am - 12:45pm (TK-3 early release)
- Lunch at school!

School Meals

- Free for all students: snack and/or lunch

LINKS to Resources

- [Sunnyvale School District Website: TK Information](#)
- [Are you Ready? A Family's Guide to Starting Kindergarten](#)

Dates to Remember

- **February 1** - Registration and Enrollment window opens!



Online Registration form link will be live on
February 1st.

ALL documents* are required **at the time of registration**, or it will not be processed.

Email will be sent from school office
upon registration completion.

***Required Documents:**

- Proof of Age for student (birth certificate or passport)
- Current list of immunizations
- TB Risk Assessment or TB Test (performed in US within 12 months)
- Picture ID for parent
- 4 proofs of residency (including lease or mortgage)

LINK TO WEBSITE: [Student Information & Enrollment / New Student Registration](#)

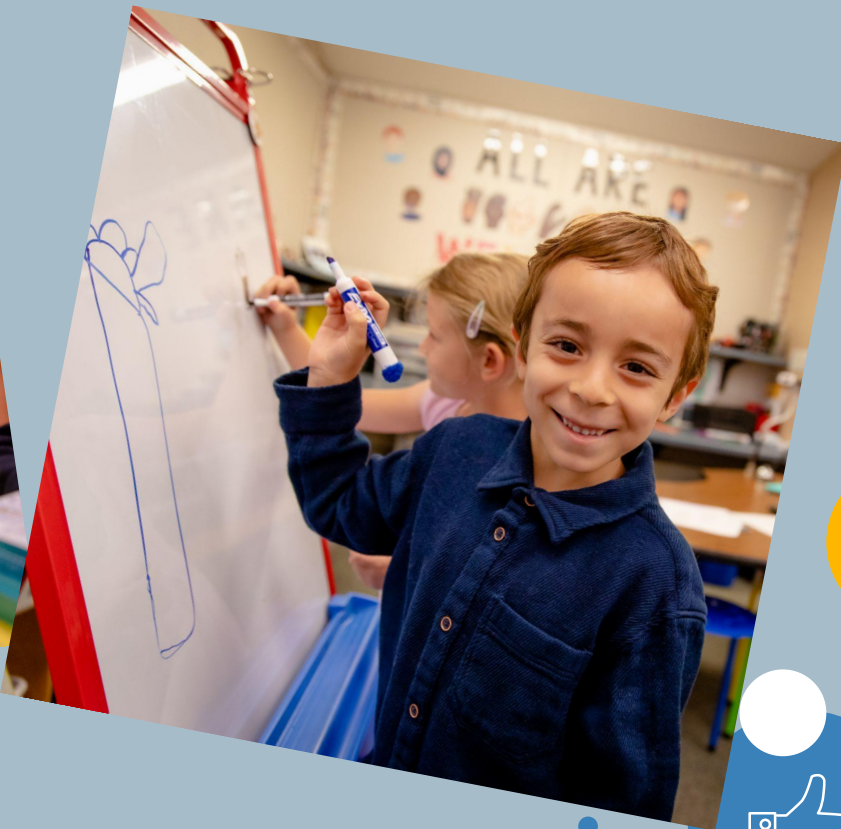
2024/25
Online
Registration

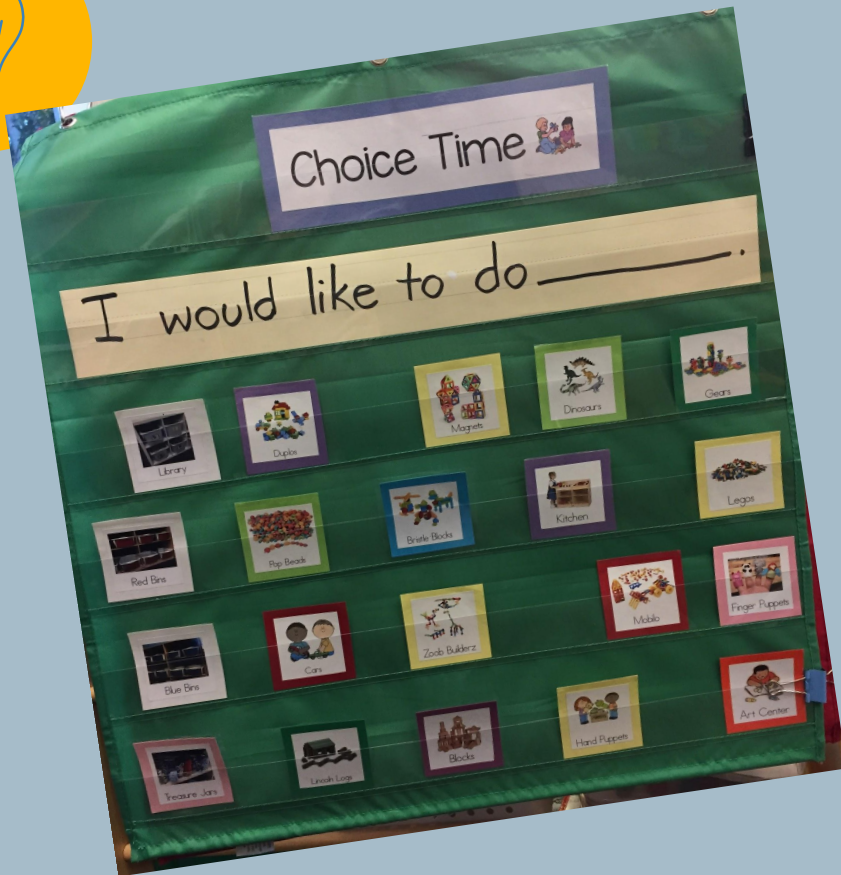




A Brief Photo Tour

Followed by Meet & Greet &
Campus Walkthrough









Websites/Contacts:

Check out our website: <https://www.sesd.org/cumberland>

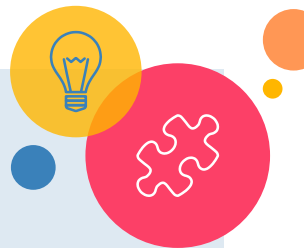
Check out PTA's website: www.cumberlandpta.org

Principal: laurie.carlson@sesd.org

Assistant Principal: lindsay.jacobson@sesd.org

Attendance/Registration Clerk: jennifer.gray@sesd.org





Credits

Special thanks to all the people who made and released these awesome resources for free:

- Presentation template by [SlidesCarnival](#)
- Photographs by [Unsplash](#)